

# Light Filled Corner Property in Point Breeze That Has It All!



1187 S 21st St, Philadelphia, PA 19146

- » Beds: 3 | Baths: 3 Full
- » MLS #: PAPH2341738
- » Single Family | Lot: 3,033 ft<sup>2</sup>
- » Extra spacious corner townhome with 2 car garage, finished basement, and roof deck offering skyline views.
- » Modern kitchen with granite countertops, sleek black cabinetry, and SS appliances.
- » More Info: 1187s21St.com



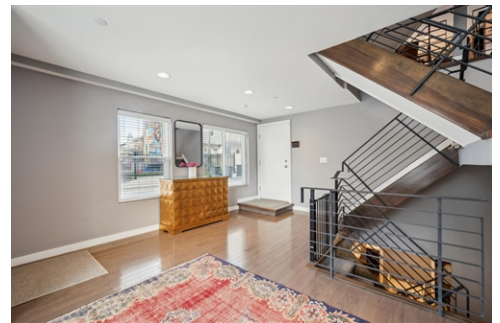
**Eric Fox**  
(267) 625-4504 (Eric Cell)  
eric@efoxhomes.com  
<http://www.efoxhomes.com>



THE ERIC FOX TEAM

Compass  
1430 Walnut Street  
3rd Floor  
Philadelphia, PA 19102  
(267) 435-8015

\$ 799,999



This light filled corner property has it all- spacious bedrooms, 2 car garage, dreamy primary suite, finished basement and a roof deck with skyline views- all on an extra wide 18-ft lot! Enter the house through the front door or the garage. Both lead into the main foyer which has a double wide coat closet plus plenty of space for a shoe rack, bench seating, storage and much much more. Head up the modern staircase to the wide-open living room, dining room and kitchen which features windows on three sides for abundant natural light. The spacious dining area doesn't in anyway encroach on the living room area maximizing the extra wide floor plan. The Chef's kitchen features granite countertops and backsplash, sleek black cabinetry, tons of storage and countertop space along with stainless-steel LG appliances. The third level houses two large bedrooms, both with large closets (one with built-in drawers and shelving). In the hallway, there is another storage closet plus the convenient laundry area with full size stackable washer and dryer. A full bath with charcoal hued tile floors and tub completes this level. The primary suite occupies the entire 4th level of the home. There's a large bedroom with two double wide closets, another open walk-in closet and a dry bar with wine fridge that's perfect for morning coffee or a nightcap. The en-suite bath was renovated by the current owners and features a marble topped double vanity, an extra wide stall shower with subway tile and frameless glass plus heated floors. Tons of additional

